



Jacksboro Hwy

For Sale: Commercial Property

2606 / 2700 Jacksboro Hwy

Wichita Falls, TX 76302

Offered at: \$2,500,000



Property Information & Building Features

Market	Wichita Falls	Foundation	Slab
Zoning	GC - General Commercial	Roofing	Pitched standing seam metal panel
Lot Size	10.264 Acres (survey)	Previous/Current Use	RV Dealership
No. of Buildings	4	Dock Doors	6
Electrical	600-Amp, 120/240 Volt	Bldg. Height	Main store/Office: 16 ft Warehouse/Service 18 ft
Roads/Major Intersections	Jacksboro Hwy/I-44 (US HWY 287)		Warehouse/Service: 10 ft Warehouse/Service: 14 ft
Building Sizes	Main store/Office: 3,600 SF Warehouse/Service: 10,900 SF Warehouse/Service: 350 SF Warehouse/Service: 1,700 SF	Year Built	1960, renovations in 1965, 1979, 1990, 2007

Detailed Property Description

Take advantage of this exceptional commercial opportunity—10.264 acres strategically located along Jacksboro Highway, offering outstanding visibility and versatility. The property features a storefront or showroom with attached office space, three separate warehouse structures, six service bay roll-up doors of varying heights, and 49 designated parking spaces. On the northwest side, the site includes three RV-height carports, providing additional functionality. With expansive open areas available for future development, additional parking, equipment servicing, or storage, this property is ideally suited to support a wide range of business operations and long-term growth.

For More Information



Maria Maloney
Realtor | Principal
940-249-2861
Maria@bishoprealtors.com

For Sale: Commercial Property

2606 / 2700 Jacksboro Hwy

Wichita Falls, TX 76302

With excellent access to major thoroughfares—including I-44 (US Hwy 287), US Hwy 281, and US Hwy 277—this property is strategically positioned for business growth. Additionally, its proximity to Kickapoo Airport provides convenient regional connectivity, making it an ideal choice for a wide range of commercial and industrial operations.



Bishop Realtor Group © 2025. All rights reserved. The information contained in this document has been obtained from sources believed reliable. While Bishop Realtor Group does not doubt its accuracy, Bishop Realtor Group has not verified it and makes no guarantee, warranty, or representation about it. It is your responsibility to independently confirm its accuracy and completeness. Any projections, opinions, assumptions or estimates used are for example only and do not represent the current or future performance of the property. The value of this transaction to you depends on tax and other factors which should be evaluated by your tax, financial and legal advisors. You and your advisors should conduct a careful, independent investigation of the property to determine to your satisfaction the suitability of the property for your needs.

For Sale: Commercial Property

2606 / 2700 Jacksboro Hwy

Wichita Falls, TX 76302



Bishop Realtor Group © 2025. All rights reserved. The information contained in this document has been obtained from sources believed reliable. While Bishop Realtor Group does not doubt its accuracy, Bishop Realtor Group has not verified it and makes no guarantee, warranty, or representation about it. It is your responsibility to independently confirm its accuracy and completeness. Any projections, opinions, assumptions or estimates used are for example only and do not represent the current or future performance of the property. The value of this transaction to you depends on tax and other factors which should be evaluated by your tax, financial and legal advisors. You and your advisors should conduct a careful, independent investigation of the property to determine to your satisfaction the suitability of the property for your needs.

For Sale: Commercial Property

2606 / 2700 Jacksboro Hwy

Wichita Falls, TX 76302



Bishop Realtor Group © 2025. All rights reserved. The information contained in this document has been obtained from sources believed reliable. While Bishop Realtor Group does not doubt its accuracy, Bishop Realtor Group has not verified it and makes no guarantee, warranty, or representation about it. It is your responsibility to independently confirm its accuracy and completeness. Any projections, opinions, assumptions or estimates used are for example only and do not represent the current or future performance of the property. The value of this transaction to you depends on tax and other factors which should be evaluated by your tax, financial and legal advisors. You and your advisors should conduct a careful, independent investigation of the property to determine to your satisfaction the suitability of the property for your needs.

2606 / 2700 Jacksboro Hwy

Wichita Falls, TX 76302



Don't miss this rare opportunity to establish or expand your business in a prime location. Contact us today for more details or to schedule a private tour.



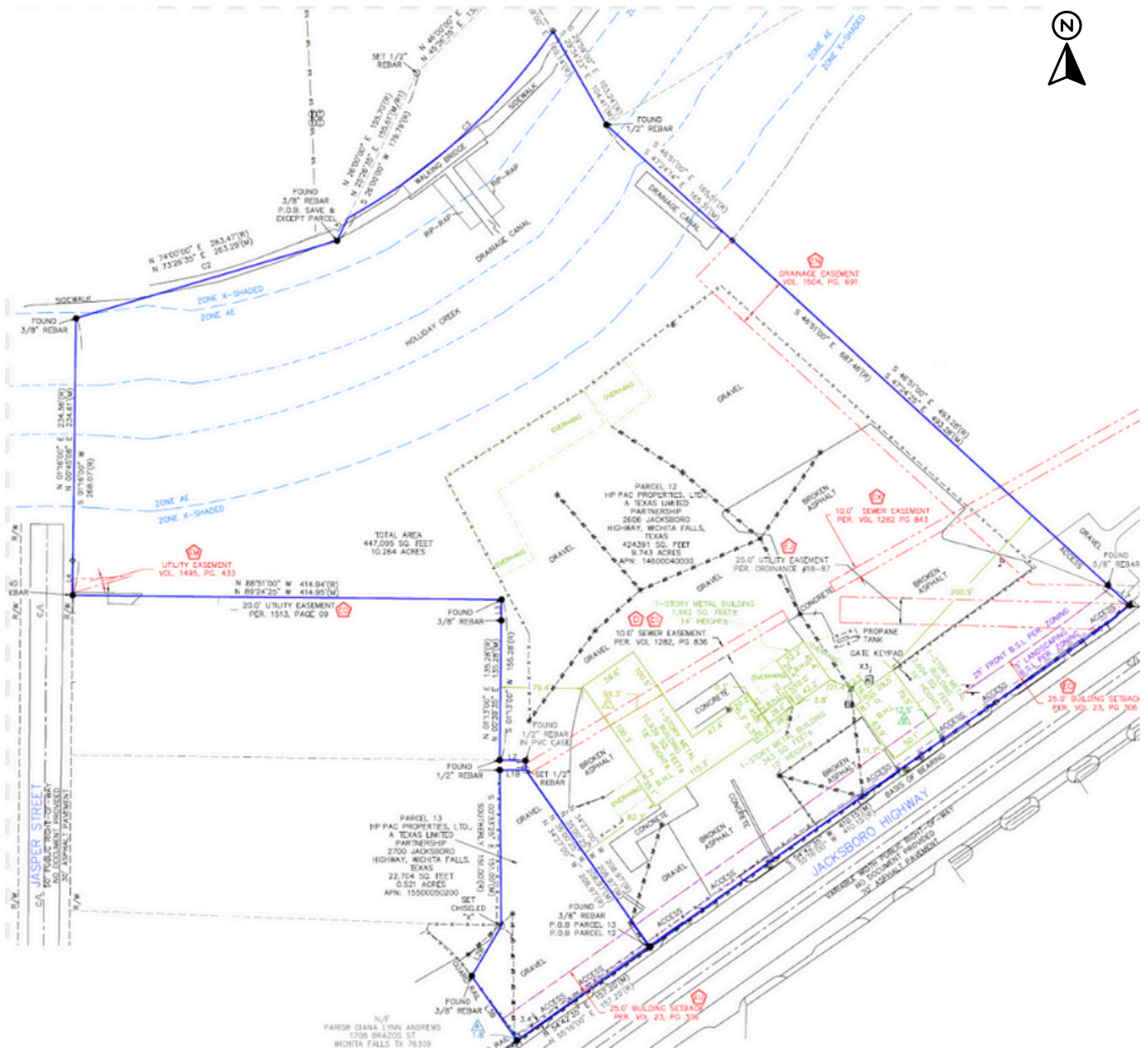
Aerial map used with permission from Lacy Beasley President of Retail Strategies

Bishop Realtor Group © 2025. All rights reserved. The information contained in this document has been obtained from sources believed reliable. While Bishop Realtor Group does not doubt its accuracy, Bishop Realtor Group has not verified it and makes no guarantee, warranty, or representation about it. It is your responsibility to independently confirm its accuracy and completeness. Any projections, opinions, assumptions or estimates used are for example only and do not represent the current or future performance of the property. The value of this transaction to you depends on tax and other factors which should be evaluated by your tax, financial and legal advisors. You and your advisors should conduct a careful, independent investigation of the property to determine to your satisfaction the suitability of the property for your needs.

2606 / 2700 Jacksboro Hwy

Wichita Falls, TX 76302

Excerpt from Existing Parent Boundary Survey



Bishop Realtor Group © 2025. All rights reserved. The information contained in this document has been obtained from sources believed reliable. While Bishop Realtor Group does not doubt its accuracy, Bishop Realtor Group has not verified it and makes no guarantee, warranty, or representation about it. It is your responsibility to independently confirm its accuracy and completeness. Any projections, opinions, assumptions or estimates used are for example only and do not represent the current or future performance of the property. The value of this transaction to you depends on tax and other factors which should be evaluated by your tax, financial and legal advisors. You and your advisors should conduct a careful, independent investigation of the property to determine to your satisfaction the suitability of the property for your needs.